

# GARDEN

# CITY

AREA RELOCATION GUIDE



*revised January 2020*




# Welcome Home



Welcome to Garden City and Finney County! We're glad you're here and we'd like you to stick around. No matter what brings you here, there are plenty of reasons to be excited about the Garden City area. Garden City is a great place to live, work, and play!

We've collected the information that we feel is vital to making the best life possible here. This guide is a comprehensive list of resources for our community, including Holcomb and Finney County. From housing and entertainment to education and employment, we hope you decide to make the Garden City area the place you call home.

We like it here and hope you do too! 

## Table of Contents

Demographics.....	3
Housing/Rentals.....	4
Education.....	5
Healthcare.....	7
Personal Care.....	8
Financial.....	10
Employment.....	11
Organizations.....	12
Recreation.....	13
Entertainment.....	16
Radio Stations.....	18
Faith & Ministry.....	19
Dining.....	22
Lodging.....	25
Transportation.....	26
Resources.....	28



# VITAL STATISTICS

Population 41,949

Median Income \$51,703

Median Age 30.6

Average Annual High Temp 67.9 degrees

Average Annual Low Temp 39.4 degrees

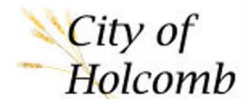
Average Daily Commute 13.9 minutes



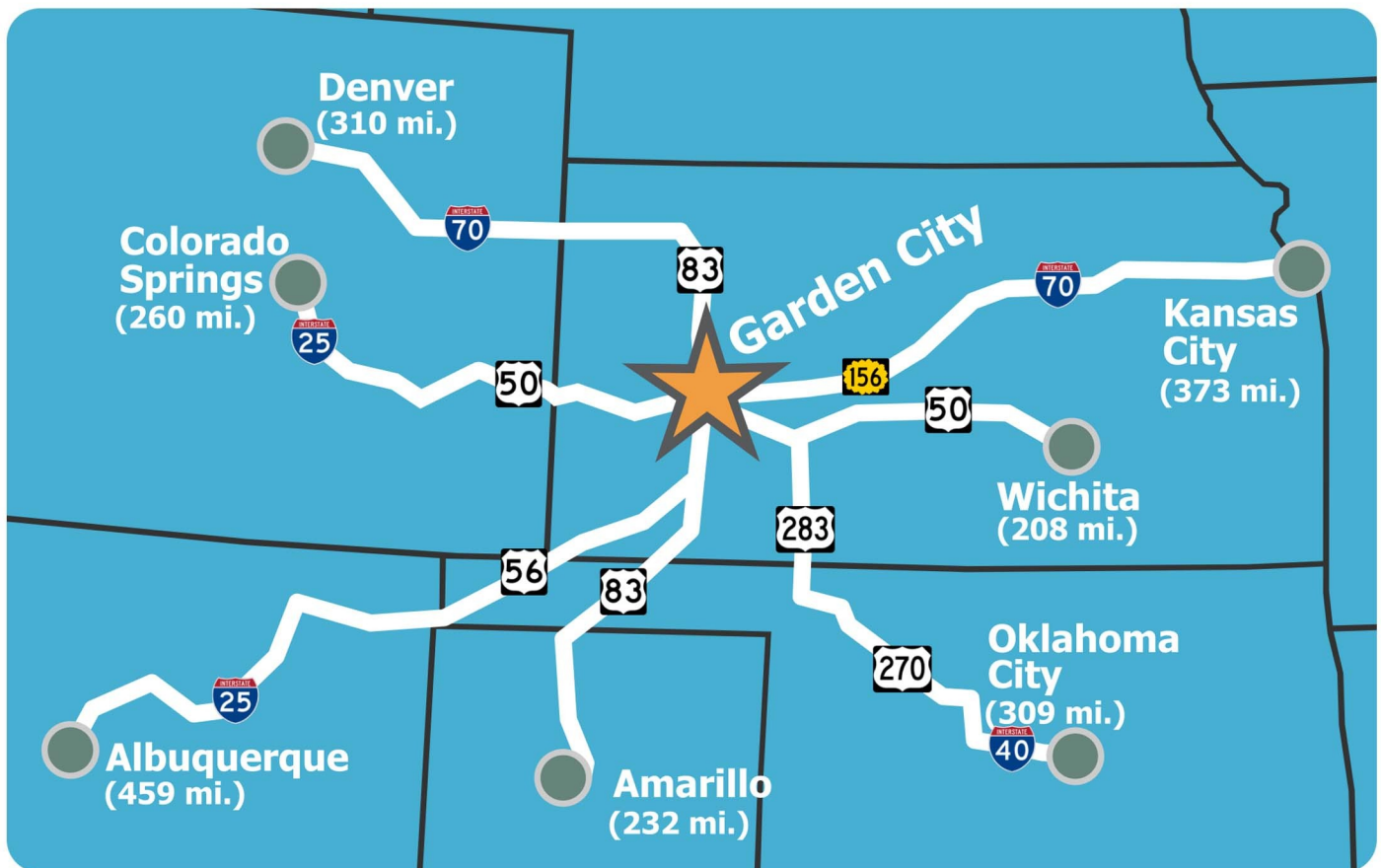
FINNEY COUNTY  
KANSAS



GARDEN CITY™  
— THE WORLD GROWS HERE —



City of  
Holcomb





# *there's no place like* HOME

Finney County is home to many diverse cultural populations and provides an excellent environment for people of all ages. An important factor for the success of a community is its ability to grow, and Finney County is growing in many areas. Each year the number of available housing units and rental units has increased to meet the needs of current and incoming citizens.

## median home value

Finney County	\$126,200
United States	\$229,700



## real estate companies

Adams Real Estate	620-275-8955
American Home Real Estate, Construction & Development	620-275-6150
ARC Real Estate, Inc.	620-275-8200
Biera Realty	620-805-2616
Coldwell Banker The Real Estate Shoppe, Inc.	620-275-7421
Envision Real Estate	620-805-5001
Heritage Realty	620-275-0284
Hometown Real Estate	620-271-9500
MBA Real Estate	620-275-7440
TJ's Real Estate	620-271-4938
United Country-Rocking X Land Company	620-276-3525

Visit [www.gardencitymls.com](http://www.gardencitymls.com)  
for a complete list of available properties in  
the area.

## Looking for rentals?

Visit [www.gardencitychamber.net](http://www.gardencitychamber.net) for a list of landlords.





# *the youth are our* **FUTURE**

Education in the Garden City area provides numerous opportunities for students and families to earn a quality education. From preschool to graduate level degree programs, Garden City supplies many educational opportunities.

## K-12 education

### *public schools*

School District:	457-Garden City
Total Student Enrollment:	7433
High School Graduation Rate:	81.2%
Mascot:	 Buffaloes
Class:	6A
Website:	<a href="http://www.gckschools.com">www.gckschools.com</a>

School District:	363-Holcomb
Total Student Enrollment:	993
High School Graduation Rate:	91.5%
Mascot:	 Longhorns
Class:	4A
Website:	<a href="http://www.usd363.com">www.usd363.com</a>

### *private schools*

School:	St. Dominic Catholic School
Grades:	PreK-6
Website:	<a href="http://www.st-dominic.org/school">www.st-dominic.org/school</a>
School:	St. Mary Catholic School
Grades:	K-6
Website:	<a href="http://www.stmaryschoolgc.com">www.stmaryschoolgc.com</a>

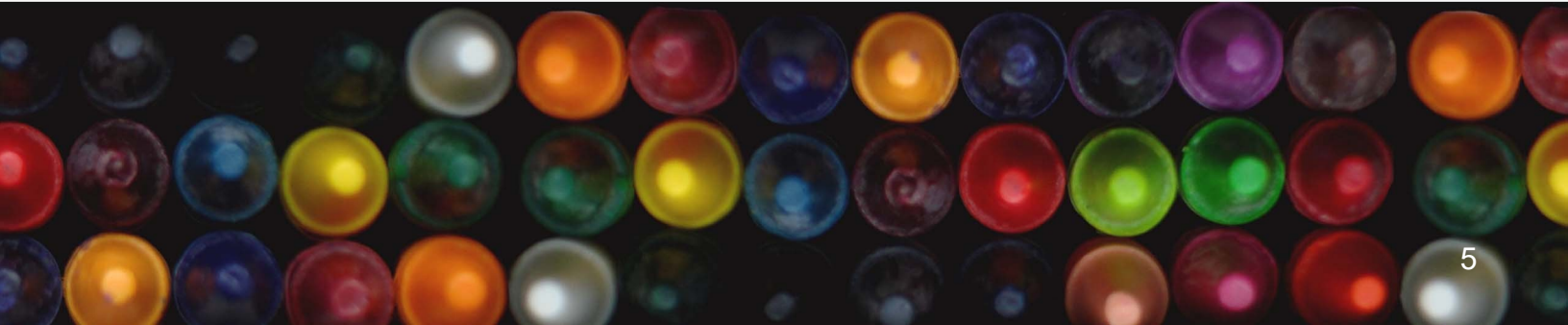
Holcomb High School



Garden City High School

## early childhood resources

- Child Care Aware of Kansas  
[www.ks.childcareaware.org](http://www.ks.childcareaware.org)
- Kansas Children's Service League  
[www.kcsl.org](http://www.kcsl.org) 620-276-3232
- Russell Child Development Center  
[www.rcdc4kids.org](http://www.rcdc4kids.org) 620-275-0291







# EDUCATION

## post secondary education

Garden City Community College was established on April 1, 1919, and is the oldest community college in Kansas. Today, GCCC is one of 19 community colleges across the state of Kansas.

GCCC is committed to producing positive contributors to the economic and social well-being of society. Course offerings include traditional classroom-based learning as well as online opportunities. Garden City Community College is host to premier technical training programs including John Deere Tech, welding, industrial maintenance, fire science, nursing, cosmetology and many more.

### *about GCCC*

Total Student Enrollment:	2072
Mascot:	Broncbuster
Website:	<a href="http://www.gccccks.edu">www.gccccks.edu</a>



### *outreach opportunities*

*available on GCCC campus*

- Fort Hays State University
- Friends University
- Newman University
- University of Kansas







# HEALTH & WELLNESS

Health and wellness is an important component of a great quality of life and the Garden City area strives to provide the best services available to our residents. Garden City and Finney County offer a full spectrum approach to health and wellness, making Garden City a regional center for healthcare.

## St. Catherine Hospital

The Garden City area is served by **St. Catherine Hospital**, a member of the Centura Health family. St. Catherine was founded over 85 years ago by the Dominican Sisters and two local physicians. In addition to the hospital, St. Catherine and Centura Health offer the following services:

- **Centura Health Convenient Care** (620) 765-1450  
-Walk In Clinic
- **Siena Medical Clinic** (620) 275-3700  
-Family Practice, General Surgery, Internal Medicine, Nephrology, Orthopedics, Pediatrics, Podiatry, Walk In Clinic, Wound Care
- **Plaza Medical Center** (620) 276-8201  
-Family Practice
- **Women's Clinic** (620) 275-9752  
-Women's Health
- **Heartland Cancer Center** (620) 272-2579  
-Complete cancer treatment facility

*\*\*Quality chiropractic, dental, vision and mental health services are also available locally.*

## Pharmacies

- Centura Health Pharmacy (620) 271-3125
- Dillons East (620) 275-1967
- Dillons West (620) 275-0194
- Plaza Pharmacy (620) 276-8251
- Sams Club (620) 272-9023
- Walgreens (620) 275-4430
- Walmart (620) 275-7557
- Walmart Neighborhood Market (620) 765-7047

## Fitness Centers

- Core Fitness (620) 277-7894
- Elite Fitness 24/7 (620) 260-2104
- Evolve Fitness (620) 430-1064
- Garden City Family YMCA (620) 275-1199
- Garden City Fit Body Boot Camp (620) 287-8310
- MM Fitness SWKS (316) 201-7022
- Project Fitness (620) 271-0935
- Zumba Fitness with Cristy (620) 805-1245
- Roots Juice Co. & Wellness Studio (620) 260-2864

## Additional Resources

- LiveWell Finney County (620) 765-1185
- Genesis Family Health (620) 275-4970
- Compass Behavioral Health (620) 276-7689
- City on a Hill (620) 276-0840
- Finney County EMS (620) 272-3822
- Finney County Health Department (620) 272-3600
- Senior Center of Finney County (620) 272-3620





# taking care of YOU...

## Full Service Spas

Gravity Wellness Center	1106 Campus Drive	(620) 260-2433
-------------------------	-------------------	----------------

## Massage Services

Flourish Herbals & Aromatherapy	203 E. Laurel	(620) 290-3416
Garden Massage	1135 College Dr Ste 11	(620) 805-6599
Hands On Massage	2001 Crestway Dr	(620) 275-1935
Natural Therapeutics	802 Meadowview Dr	(620) 640-5889
Shift Center	633 Briar Hill Dr	(620) 290-0507
Sore Spot Massage Therapy	801 N Main St Ste 1	(620) 805-1854

## Nail Salons

Angel Nails & Spa/Nailicious	1502 Harding Ave	(620) 521-7411
Fashion Nails	519 W Mary St Ste 117	(620) 287-6037
Hot Nails	1502 Harding Ave	(620) 276-3096
Nail Style	1660 Lareu St Ste D	(620) 277-7920
Perfect 10 Nails	2504 Johns St	(785) 432-3213
Tammy & Co	402 N 7th St A	(620) 275-5058

## Tanning Services

Afterglo	1601 E Mary St #3	(620) 277-7811
Xtreme Tanning	201 N Main St	(620) 276-6444







## Barber Shops

All's Barber Shop Five Points	1209 Buffalo Jones Ave	(620) 275-4644
Barber Enterprises Inc	701 Pats Dr	(620) 276-6238
California Classic Cuts	713 E Kansas Plaza	(909) 831-1499
Rybak's Barber Shop	325 N 7th St	(620) 640-3053
City Kuts Barber Shop	1502 E Harding Ave #5	(620) 805-5056
Exclusive Barber Shop	317 N 8th St	(620) 805-6100
MJ's Barbershop	1135 College Dr J	(620) 805-6534
Culture Barbershop	107 W Chestnut St	(785) 829-0130

## Hair Salons

Another Look Salon and Spa	1902 E Mary St Ste A	(620) 275-5553
Carizma Salon & Boutique	310 N Main St	(620) 287-8290
Color Works Salon & Spa	519 W Mary St #106	(620) 275-7900
Emmy's Hair Salon	206 N 7th St	(620) 271-0041
Glamour Salon	707 E Fulton St	(620) 277-7922
Generations Salon	111 E. Laurel St	(620) 276-2252
Great Clips	1660 Lareu Rd Ste C	(620) 277-7945
High Maintenance	1502 E Harding Ave #3	(620) 271-0944
Illusions Hair Salon	218 N Main St	(620) 276-3979
Imagen Total 519	101 W Mary St	(620) 805-6868
Infinity Salon	1135 College Dr Ste H	(620) 276-3502
JCP Salon	2302 E Kansas Ave	(620) 275-9115
Kim's Beauty Salon	1009 E Fulton St	(620) 276-6166
Laura Baier Hair & Nail Salon	111 W Chestnut St	(620) 275-1200
La Villa Salon	2001 E Spruce St	(620) 276-0776
Legends	109 W Grant Ave	(620) 276-6777
Lux Nails & Hair Salon	112 E Chestnut St	(620) 805-6044
Main Street Salon & Spa	523 N. Main St	(620) 276-3019
Nicole Austin Salon	602 N 7th St	(620) 275-4010
Nstyle Salon	317 N 8th St	(620) 276-4223
Pigtails	402 N. Henderson St (Holcomb)	(620) 277-2555
Queen's Exclusive		(316) 806-4132
Rose Ann Beauty Shop	305 N 12th St	(620) 276-6659
San Juan Beauty Salon	506 W Fulton St	(620) 276-3615
Serenity Salon & Spa	1135 College Dr #13	(620) 805-5393
Shear Style Salon	218 N Main St	(620) 287-8318
Signature's The Salon	519 W Mary St Ste 102	(620) 272-0255
SmartStyle Hair Salon	3101 E Kansas Ave	(620) 275-1723
The Room Salon	110 E Chestnut St	(620) 290-4227
Tranquility Salon & Spa	1103 E Kansas Plaza	(620) 276-3412
Ulta Beauty	1670 Larue St	(620) 276-3734



# FINANCIAL RESOURCES

Whether your banking needs are personal or business related, or a combination of both, the Garden City area offers a wide variety of options.

## Banks & Credit Unions

American AgCredit	1606 E Kansas Ave	(620) 275-4281
American State Bank & Trust	1901 E Mary St	(620) 271-0123
American State Bank & Trust- Holcomb	401 N Henderson St	(620) 277-0077
Bank of the West	1301 E Kansas Ave	(620) 276-7000
Commerce Bank- main location	1111 Fleming St	(620) 276-5600
First National Bank- downtown	908 N Main St	(620) 276-6971
First National Bank- east location	2414 E Kansas Ave	(620) 276-1600
Garden City State Bank	1910 E Mary St	(620) 271-9700
Garden City Teachers Federal Credit Union	1601 E Kansas Ave	(620) 275-0131
Golden Plains Credit Union- main location	1714 E Kansas Ave	(620) 275-2151
Golden Plains Credit Union- west location	1504 Taylor Plaza	(620) 275-8187
Grant County Bank	511 N Campus Dr	(620) 277-3721
Landmark Bank	1007 N Main St	(620) 275-2166
Valley State Bank	1701 E Mary St	(620) 805-6700
Western State Bank- main location	1500 E Kansas Ave	(620) 275-4128
Western State Bank- downtown	602 N Main St	(620) 275-9269
Western State Bank- west location	409 W Kansas Ave	(620) 272-9916

*\*\*Quality insurance agencies and financial planning services are also available locally*







# EMPLOYMENT RESOURCES

Garden City and the Finney County area offer a diverse collection of employment opportunities, ranging from the agriculture and manufacturing industry, to healthcare, retail, financial and professional services.

## Major Employers

- 1 Tyson Foods  
[www.tysonfoodscareers.com](http://www.tysonfoodscareers.com)
- 2 USD #457  
[www.gckschools.com](http://www.gckschools.com)
- 3 Samy Enterprises  
[www.samysgck.com](http://www.samysgck.com)
- 4 St. Catherine Hospital  
[www.centura.org/careers](http://www.centura.org/careers)
- 5 Garden City Community College  
[www.gcccks.edu/employmentopp](http://www.gcccks.edu/employmentopp)

Finney County truly has something for everyone. Other area employers include the City of Garden City, Finney County, Sunflower Electric Power Corporation, Walmart, Sam's Club, Garden City Cooperative, Golden Plains Credit Union, Compass Behavioral Health and many more.

## Additional Resources

- KansasWorks  
[www.kansasworks.com](http://www.kansasworks.com)
- Western Kansas Jobs  
[www.westernksjobs.com](http://www.westernksjobs.com)
- Finney County Economic Development Corporation  
[www.ficoedc.com](http://www.ficoedc.com)

*We've got jobs!*



# GET INVOLVED

The Garden City area has many opportunities to get involved to serve your community while networking with other residents of Finney County.

## Civic & Professional Organizations

American Legion	(620) 275-6875
Elks Lodge	(620) 276-3732
Fraternal Order of Eagles	(620) 276-7361
Kiwanis	@GardenCityKansasKiwanis
Lions Club	(620) 276-8552
Rotary Club of Garden City	(620) 276-3032
Veterans of Foreign Wars (VFW)	(620) 275-1825
Finney County Young Professionals	@FiCoYP on facebook
Garden City Board of Realtors	(620) 275-2698
Public Relations Society of Southwest Kansas	@PRSocietyofSWKS on facebook
Society of Human Resource Managers	www.shrmswks.com
Southwest Kansas Builders Association	@SWKBA19 on facebook

## Volunteer Opportunities

Finney County has many volunteer opportunities available in addition to the civic and professional organizations.

Miles of Smiles	(620) 260-9997
Big Brothers Big Sisters of Finney & Kearny Counties	(620) 275-2424
Boys Scouts of America	(620) 275-5162
Girls Scouts of Kansas Heartland	(620) 276-7061
United Way of Finney County	(620) 275-1425
Finney County Humane Society	(620) 277-3725

*\*\* This is not a comprehensive list of volunteer organizations. There are MANY options in Finney County available for those interested in volunteering their time. For more information on volunteer opportunities please email [fcedc@ficoedc.com](mailto:fcedc@ficoedc.com).*





# PLAY here . . .

There is always something to do here - play a round of golf on our TWO nationally recognized golf courses, take a fitness class, or bike the Talley Trail. Neighborhood parks offer such amenities as playgrounds, skateboard facilities, jogging and walking paths, basketball courts, and soccer and baseball fields.

Finney County has made a concerted effort to constantly be on the lookout for things to enhance the quality of life in the area.

## Lee Richardson Zoo

Lee Richardson Zoo is one of the area's premier zoos and is AZA certified. With a world class staff, the facility offers family friendly events for people of all ages: Giraffe Encounters, hands-on educational opportunities and behind the scenes sneak peeks. Did we mention that it's FREE ADMISSION?!?!



## Talley Trail



## Parrot Cove Indoor Water Park

Garden City is home to the only indoor water park between Denver and Kansas City. You'll find 36,000-square-feet of fun at Parrot Cove! Splash down one of the four water slides, climb the rock wall, lounge in the lazy river, and much more! There is something for everyone at Parrot Cove! Other attractions include splash zone, wading pool, plunge area and lily pad cross. With daily specials, it is sure to be fun for the whole family.



## Garden City Wind Baseball

In 2015, Garden City became host city to the Garden City Wind Professional Baseball team. Establishing its home in the historic Clint Lightner Field, the Wind take the field numerous days per week from May and running through July.

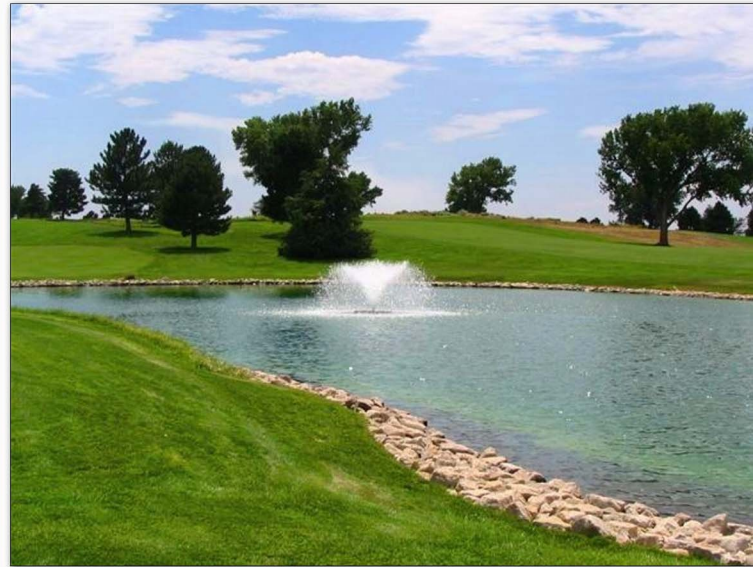






## Buffalo Dunes Golf Course

Buffalo Dunes Golf Course was ranked as the number one municipally-owned golf course in Kansas by Golf Digest magazine, and has been recognized by Golf Magazine and Travel & Leisure Magazine as "best places to play" and "best bang for your buck." Challenging, enjoyable and affordable, Buffalo Dunes is nestled among the historic sand hills six miles south of Garden City. Southwest Kansas offers a 4-season climate, and golf can be played throughout the year, weather permitting. Opened in 1976 on land donated by E.C. Brookover Sr., Buffalo Dunes is one of the host courses to the prestigious Southwest Kansas Pro-Am every August. Among the golfing greats who have walked the fairways of the Dunes are U.S. Open champions Steve Jones and Lee Janzen, and British Open champions Tom Weiskopf and Stewart Cink. Beautifully conditioned, the Dunes has bluegrass fairways, well-maintained bentgrass greens and native grasses that challenge the golfer and provide a memorable experience. The course can play at differing lengths based upon a player's skill level, with yardages from 5,452 to the championship tees of 6,806 yards.



## Sandsage Bison Range

Formerly known as the Finney Game Refuge, this wildlife area is managed primarily for its herd of more than 100 bison. It is divided into three large pastures. For safety, the public is not allowed to enter the areas containing the bison unescorted. Access is limited, and prior arrangements need to be made for a tour. Call the Friends of the Sandsage Bison Range and Wildlife Area at (620) 276-9400 for information on bison tours as well as the June wildflower tour and "Breakfast on the Prairie."

## The Big Pool

### *World's Largest Outdoor Municipal Concrete Swimming Pool*

Bigger than a football field, The Big Pool holds 2.2 million gallons of water and is big enough for water-skiing. It was originally hand dug in 1922. During the Great Depression a bathhouse was added by the Works Progress Administration. Farmers used horse-drawn scrapers to enlarge the pool during that time. The Big Pool has an Olympic-sized lap pool, three water slides, a zero entry depth kiddie pool, shade umbrellas, picnic tables, and everything else you'd expect from a modern swimming pool.







## Horsethief Reservoir

Horsethief Reservoir is located just 45 minutes east of Garden City on Highway 156. Whether your interest lies in fishing, boating, camping, or just being outdoorsy, Horsethief has something for everyone. In operation since June 2010, the park boasts over 1600 acres of gorgeous Kansas prairie and 450 acres of water. Park amenities include:



- 55 utility campsites
- Unlimited primitive campsites
- Playground
- Basketball court
- Horseshoe pits
- Swimming area
- Cabin rentals
- On-site park office
- Lodge & open-air pavilion
- Disc golf course
- Hiking & biking trails
- Hunting (in season)
- Various special events throughout the year

[horsethiefreservoir.com](http://horsethiefreservoir.com)

19005 SW 156 Highway  
Jetmore, KS 67854  
(620) 253-8464

Lake Scott State Park is located approximately 46 miles north of Garden City, just west of US Highway 83, and is listed by National Geographic as one of the country's 50 must-see state parks. The 1,020 acre park surrounds the 100 acre, spring-fed Scott State Fishing Lake, and a 160 acre wildlife area lies west of the park.

Over 26 archeological sites have been documented in and around the park, making it one of the most historic locations in Kansas. Scott State Park is home to El Cuartelejo, the northernmost known Native American pueblo. About 1 mile south of the park is Battle Canyon, the location of the last Native American battle in Kansas.

## Lake Scott State Park



Park amenities include:

- Camping
- Boating
- Swimming area
- Hiking
- Hunting (in season)
- Fishing
- Nature trails
- Horseback riding
- Horse camp

[ksoutdoors.com](http://ksoutdoors.com)

101 West Scott Lake Drive  
Scott City, KS 67871  
(620) 872-2061





# something for EVERYONE

Finney County is home to a very active Arts community. Looking for a play? Art gallery? Festival? You'll find it here!

- Garden City Arts [www.gardencityarts.org](http://www.gardencityarts.org)
- Mercer Gallery [www.gcccks.edu](http://www.gcccks.edu)
- Tumbleweed Festival [www.tumbleweedfestival.com](http://www.tumbleweedfestival.com)
- Southwest Kansas Live on Stage [www.liveonstagegardencity.org](http://www.liveonstagegardencity.org)

Tumbleweed Festival



Southwest Kansas Live on Stage



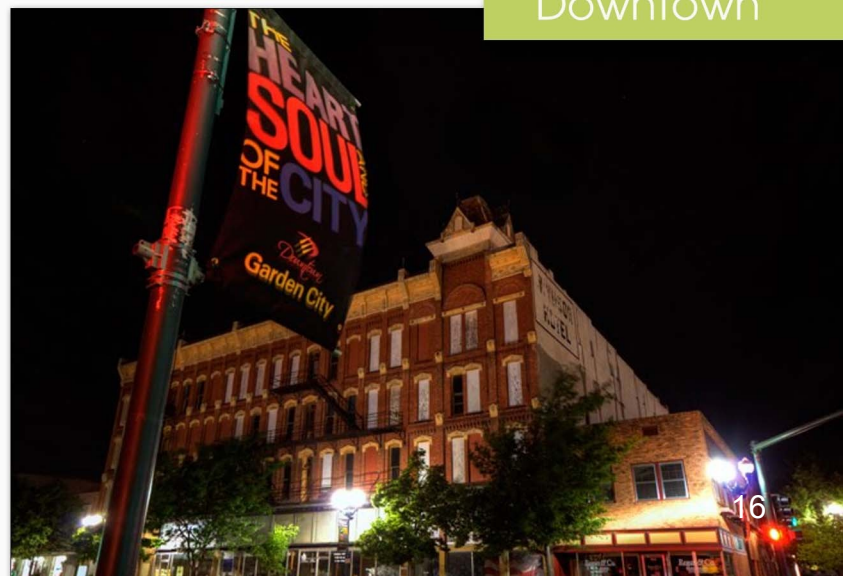
Whether you are looking for major national retailers or hometown favorites, the Garden City area has just what you're looking for. The newly developed Schulman Crossing features over 300,000 sq ft of retail space and features major retailers like TJ Maxx, Ulta and Dick's Sporting Goods.

Mercer Gallery



Head just a bit farther west and check out our great downtown district with a fabulous coffee house, various restaurants and many niche shops. Plus, Main Street is the home to Stevens Park where numerous concerts and festivals are held throughout the year.

Downtown







# helpful links

Beef Empire Days	<a href="http://www.beefempiredays.com">www.beefempiredays.com</a>
The Big Pool	<a href="http://www.garden-city.org/our-community/big-pool">www.garden-city.org/our-community/big-pool</a>
Buffalo Dunes Golf Course	<a href="http://www.buffalodunes.org">www.buffalodunes.org</a>
City Parks	<a href="http://www.garden-city.org">www.garden-city.org</a>
Finney County Convention & Visitors Bureau	<a href="http://www.visitgck.com">www.visitgck.com</a>
Finney County Historical Museum	<a href="http://www.finneycounty.org">www.finneycounty.org</a>
Garden City Arts	<a href="http://www.gardencityarts.org">www.gardencityarts.org</a>
Garden City Downtown Vision	<a href="http://www.gcdowntown.com">www.gcdowntown.com</a>
Garden City Recreation Commission	<a href="http://www.gcrec.com">www.gcrec.com</a>
Garden City Wind	<a href="http://www.gardencitywind.com">www.gardencitywind.com</a>
The Golf Club at Southwind	<a href="http://www.tgcsouthwind.com">www.tgcsouthwind.com</a>
Greater Garden City	<a href="http://www.greatergc.com">www.greatergc.com</a>
Lee Richardson Zoo	<a href="http://www.leerichardsonzoo.org">www.leerichardsonzoo.org</a>
Mercer Gallery	<a href="http://www.gcccks.edu">www.gcccks.edu</a>
Parrot Cove Water Park	<a href="http://www.parrotcovewaterpark.com">www.parrotcovewaterpark.com</a>
Sandsage Bison Range	<a href="http://www.naturalkansas.org/sandsage.htm">www.naturalkansas.org/sandsage.htm</a>
Southwest Kansas Live on Stage	<a href="http://www.liveonstagegardencity.org">www.liveonstagegardencity.org</a>
Tumbleweed Festival	<a href="http://www.tumbleweedfestival.com">www.tumbleweedfestival.com</a>
YMCA of Southwest Kansas	<a href="http://www.ymcaswkansas.org">www.ymcaswkansas.org</a>





# ON AIR

## News/Talk

104.9 FM  
550 AM  
880 AM  
1030 AM  
1210 AM  
1240 AM  
1270 AM  
1310 AM  
1370 AM

## Sports

99.9 FM  
102.9 FM  
1410 AM  
1550 AM

## Public Radio

91.1 FM

## Religious

89.9 FM  
99.1 FM  
100.5 FM  
103.9 FM  
107.9 FM

## Spanish

91.9 FM  
92.9 FM  
101.5 FM  
105.9 FM

## Country

96.3 FM  
97.3 FM  
100.9 FM  
790 AM  
920 AM

## Top 40

93.9 FM  
98.1 FM

## Adult Contemporary

94.5 FM  
1290 AM

## 80's

101.7 FM

## Classic Hits

95.5 FM  
1340 AM  
1420 AM





# AREA churches

## Apostolic

The Apostolic Church  
3102 Schulman Ave  
(620) 272-4780

## Assembly of God

First Assembly of God Church  
702 Campus Dr  
(620) 276-3371  
[www.firstassemblygc.com](http://www.firstassemblygc.com)

Assembly of God Church  
1311 New York Ave  
(620) 275-7667

## Baptist

Faith Baptist Church  
1455 N 16 Mile Rd  
(620) 275-7350  
[www.faithbaptist-gc.org](http://www.faithbaptist-gc.org)

Fellowship Baptist Church  
506 N 1st St  
(620) 275-5304

First Baptist Church  
1005 N 11th St  
(620) 275-5266

First Southern Baptist Church  
2708 N 3rd St  
(620) 276-7859  
[www.fsbcgc.com](http://www.fsbcgc.com)

Iglesia Bautista del Sur  
1107 W Olive  
(620) 276-3138

Iglesia Bautista Nueva Vida  
506 N 1st St  
(620) 275-5304

Second Baptist Church  
1107 N Main St  
(620) 276-2805

Western Kansas Baptist Association  
1202 A St  
(620) 275-7223

The First Baptist Church of Holcomb  
403 Emmanuel Dr

## Buddhist

Vietnamese Buddhist Association  
910 E Spruce St  
(620) 271-0272

## Catholic

St. Dominic Catholic Church  
615 JC St  
(620) 276-2024  
[www.st-dominic.org](http://www.st-dominic.org)

St. Mary Catholic Church  
509 St John St  
(620) 275-4204  
[www.stmarygc.com](http://www.stmarygc.com)

## Church of the Brethren

Church of the Brethren  
505 N 8th St  
(620) 276-7391  
[www.gardencitycob.org](http://www.gardencitycob.org)

## Episcopal

St. Thomas' Episcopal Church  
710 N Main St  
(620) 276-3173



## Jehovah's Witness

Kingdom Hall of Jehovah's Witness  
210 E Prospect  
(620) 275-4372

## Lutheran

St. James Lutheran Church, ELCA  
1608 Belmont Pl  
(620) 275-5108  
[www.stjameslutherangardencity.com](http://www.stjameslutherangardencity.com)

Trinity Lutheran Church  
1010 Fleming St  
(620) 276-3110  
[www.tlcgck.org](http://www.tlcgck.org)

## Mennonite Brethren

Garden Valley Church  
1701 N 3rd St  
(620) 276-7410  
[www.gardenvalleychurch.com](http://www.gardenvalleychurch.com)

## Methodist

Evangelical United Methodist Church  
614 N 13th St  
(620) 276-3800

First United Methodist Church  
1106 N Main St  
(620) 275-9171  
[www.fumcgc.com](http://www.fumcgc.com)

## Mormon

Church of Jesus Christ of Latter-Day Saints  
619 Mary St  
(620) 275-4305

## Nazarene

Church of the Nazarene  
11th & Elizabeth  
(620) 872-3181

Garden City Church of the Nazarene  
2720 Campus Dr  
(620) 275-4278  
[www.gcnaz.com](http://www.gcnaz.com)

## Orthodox Christian

Three Hierarchs Orthodox Christian Church  
2009 N Main St  
(620) 271-0811  
[www.antiochian.org](http://www.antiochian.org)

1st Pentecostal Church  
216 N 9th St  
(620) 253-7481

Iglesia Pentecostal Jesucristo  
3050 N 8th St  
(620) 275-0449

## Presbyterian

The Presbyterian Church  
1719 Texas St  
(620) 275-9141  
[www.pcgardencity.org](http://www.pcgardencity.org)

## Seventh-Day Adventist

Iglesia Adventista del Septimo Dia  
1801 W Kansas Ave  
(620) 275-7200

Seventh-Day Adventist Church  
2710 N Fleming St  
(620) 275-9356  
[gardencity22.adventistchurchconnect.org](http://gardencity22.adventistchurchconnect.org)

## United Church of Christ

Community Congregational Church  
710 N 3rd St  
(620) 275-5623





## Nondenominational

Bible Christian Church  
1404 E Mary St  
(620) 276-8356  
[www.biblechristiangc.com](http://www.biblechristiangc.com)

Church of Christ  
1715 Pioneer Rd  
(620) 276-2500  
[www.gcchurchofchrist.com](http://www.gcchurchofchrist.com)

Iglesia Cristiana Apsotoles y Profetas  
2202 W Jones  
(620) 521-3798

Cornerstone Church  
2901 N 8th St  
(620) 275-5965  
[www.cornerstonepeople.org](http://www.cornerstonepeople.org)

First Christian Church  
306 N 7th St  
(620) 275-5411  
[www.fccgcks.org](http://www.fccgcks.org)

Grace Bible Church  
2595 Jennie Barker Rd  
(620) 275-6701

Journey to the Cross  
1205 W Maple St  
(620) 521-1949  
[www.journeytothecrossgc.org](http://www.journeytothecrossgc.org)

Misión Cristiana Elim  
2510 E Schulman Ave  
(620) 275-4598

New Life Community Church  
3101 Campus Dr  
(620) 272-6198  
[www.newlifechurchgc.org](http://www.newlifechurchgc.org)

Pierceville Federated Church  
203 E Avenue A  
(620) 335-5228

Plymell Union Church  
25 W Plymell Rd  
(620) 276-6160

Prairieview Church of the Brethren  
(620) 267-6481

Word of Life Church  
3004 N 3rd St  
(620) 276-3825  
[www.thewolc.org](http://www.thewolc.org)



# let's EAT!

## American

Applebee's  
 Buffalo Wild Wings  
 Golden Corral Buffet  
 Hanna's Corner  
 Jax Sports Grille  
 Pinky's Grilled Cheestro  
 Old Chicago  
 Time Out  
 Thirsty Dawg  
 Traditions Soda & Sandwich  
 Ward's Garden Café

3030 E Kansas Ave  
 1530 Lareu St 100  
 1727 E Kansas Plaza  
 2605 N Taylor Ave  
 1907 E Mary St  
 2204 E. Kansas Ave Ste 1  
 1010 Stone Creek Dr.  
 1319 N Taylor Ave  
 301 E Jones Ave (Holcomb)  
 121 Grant Ave  
 2703 N Taylor Plaza

## Asian

Dragon Express  
 Jade Buffet  
 Ninja Sushi & Steakhouse  
 Osaka Steak & Sushi House  
 Pho Hoa  
 Saigon's Corner  
 Thai Arawan

118 N Taylor Ave  
 1505 E Kansas Ave  
 416 N Main St  
 1660 Lareu St  
 713 E Fulton St  
 406 E Kansas Ave  
 902 E Fulton St

## BBQ

Plank's BBQ  
 Rib Crib

912 E Fulton St  
 1750 Lareu St

## Breakfast

IHOP  
 Hanna's Corner  
 Time Out

2507 E Crestway Dr  
 2605 N Taylor Ave  
 1319 N Taylor Ave

## Brewpub

Flat Mountian Brewhouse

207 N Main St

## Coffee

Central Cup  
 Patrick Dugan's  
 Scooters Coffee  
 Scooters Coffee  
 Starbucks

517 N 8th St  
 301 N Main St  
 2517 N Campus Dr  
 601 Kansas Ave  
 2401 E Kansas Ave







### Dessert

- Baskin Robbins 1521 E Fulton St
- Baskin Robbins 2505 S Fleming St
- Below Zero 108 W Kansas Ave
- Dairy Queen 114 W Kansas Ave
- La Michoacana 1014 W Mary St
- Loving's Cakes 210 E Spruce St
- Paleteria Tarahumara 1101 N Taylor Ave
- Paleteria Tarahumara 4003 E Highway 50 Suite A
- Penguin Rolled Ice Cream 1530 Lareu St Ste B
- Wam's Tropical Sno 2410 N Cherokee Rd

### Donuts

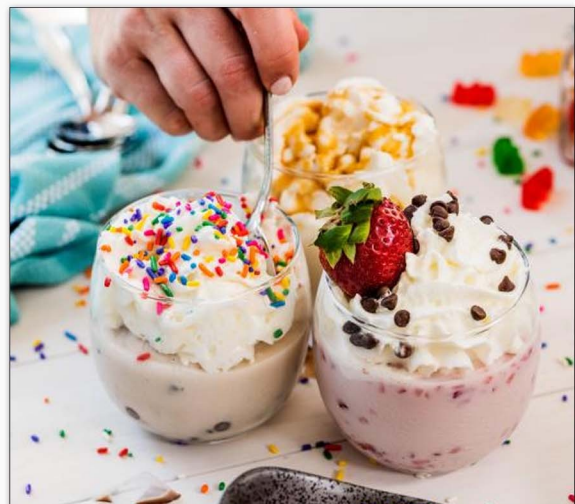
- Daylight Donuts 201 E Kansas Ave

### East African

- Selam East African Restaurant 1110 Campus Dr

### Fast Food

- Arby's 1719 E Kansas Plaza
- Burger King 1601 Taylor Plaza
- Burger King 2415 E Kansas Ave
- Freddy's 3112 E Kansas Ave
- Jimmy John's 503 E Kansas Ave
- KFC 2208 E Kansas Ave
- Long John Silver's 205 E Kansas Ave
- McDonald's 1613 E Kansas Plaza
- McDonald's 1106 Taylor Plaza
- Popeyes Louisiana Kitchen 3108 E Kansas Ave
- Sonic Drive-In 1313 E Kansas Ave
- Sonic Drive-In 1212 Buffalo Jones Ave
- Sonic Drive-In 1500 N Jones Ave (Holcomb)
- Subway 210 E Kansas Ave
- Subway 3101 E Kansas Ave
- Subway 1320 N Taylor Ave
- Subway 3285 E US 50
- Subway 1500 N Jones Ave
- Taco Bell 2408 E Kansas Ave
- Taco Johns 2875 E Schulman
- Wendy's 1403 E Kansas Ave



### Food Truck

- Dragon Wagon facebook.com/dragonwagonks
- Nature's Way 719 E Kansas Ave
- New Grind Coffee facebook.com/newgrindcoffeellc
- Pinky's Grilled Cheestro facebook.com/PinkysGC
- Tacos El Guanajuato 50 S Farmland Rd





Italian

Napoli's

2215 S Air Service Dr

Latin American

La Playa Dorada  
Mariscos Puerto Nuevo

212 W Fulton St B  
1107 N Taylor Ave

Mexican

Carniceria Garcia  
Casa Mariachi  
El Agave  
El Canelo Tacos y Mariscos  
El Clamatazo  
El Paisa  
El Patron  
El Rancho  
El Zarape  
La Cabana  
La Estrella  
Las Margaritas  
Sol y Luna  
Tacos El Tapatio  
Taco Salinas  
Tacos La Carreta  
Taqueria El Compa  
Tequilas

622 N 8th St  
125 W Pine  
511 W Kansas Ave  
1110 Campus Dr  
707 E Fulton St  
3101 W Jones Frontage  
606 W Fulton St  
305 N Main St (Holcomb)  
2501 E Fulton  
110 W Kansas Ave  
305 E Kansas Ave  
301 N Main St  
1604 Buffalo Jones Ave  
1203 E Fulton St  
306 W Fulton St  
118 W Kansas Ave  
519 W Mary St #111  
1715 E Kansas Ave

Pizza

Domino's  
Little Caesars  
Papa John's  
Pie Five  
Pizza Hut  
Pizza Hut

2312 E Kansas Ave  
1810 E Kansas Ave  
1016 N Main St  
1110 Fleming St  
301 E Kansas Ave  
1627 N Taylor Ave

Steakhouse

Garden City Steakhouse  
Samy's Spirits & Steakhouse

1301 E Fulton St  
1911 E Kansas Ave





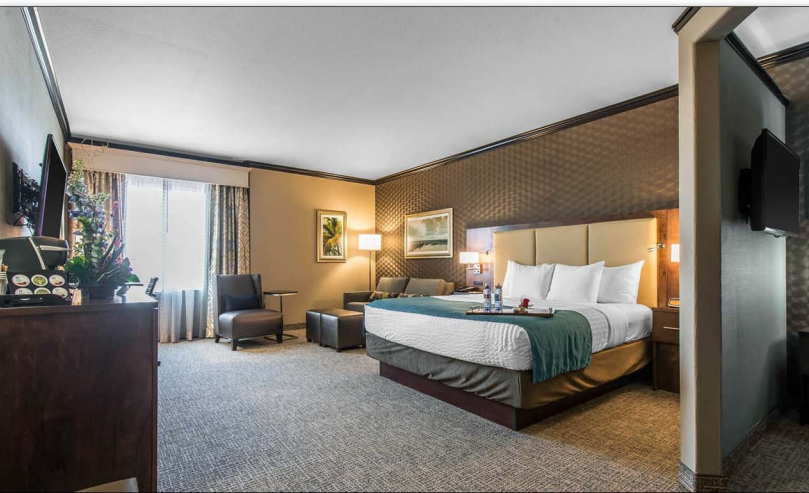


# STAY *awhile*...

The Flinney County area boasts a wide array of lodging facilities. Whether your needs are short term or for a longer period of time, business or pleasure, we hope you enjoy your stay!

Sunnyland Bed & Breakfast	(620) 276-0500
America's Best Value Inn	(620) 275-5095
AmericInn Lodge & Suites	(620) 272-9860
Best Western Plus Emerald Inn & Suites	(620) 277-7100
Clarion Inn & Conference Center	(620) 275-7471
Comfort Inn	(620) 275-5800
Continental Inn	(620) 276-7691
Flamingo Motel	(620) 276-7601
Garden City Inn	(800) 741-5072
Hampton Inn Garden City	(620) 272-0454
Holiday Inn Express Hotel & Suites Garden City	(888) 465-4329
Magnuson Hotel Red Baron	(620) 275-4164
Marriott TownePlace Suites	(855) 347-6717
National 9 Inn	(877) 675-0677
New Sunflower Inn Suites	(620) 276-2387
Sleep Inn & Suites And Conference Center	(620) 805-6535
The Heritage Inn & Suites	(620) 277-7477

*For additional information on lodging facilities in the area, please visit [www.visitgck.com](http://www.visitgck.com).*





# DESTINATION: *anywhere*

Garden City and Finney County have ample options for travel, whether it be business or pleasure. With many affordable choices available, Garden City truly is a hub for to get to wherever you need to go.

## Air Travel

Garden City Regional Airport offers flights to Dallas/Ft. Worth Airport (DFW) through American Airlines serviced by Envoy Air. For reservations or flight information, please visit [www.aa.com](http://www.aa.com) or call 1-800-433-7300.

Private plane services are also available. Please visit [www.fly2gck.com](http://www.fly2gck.com) for more information.

## Amtrak

The Southwest Chief runs daily between Chicago and Los Angeles, with a stop in Garden City, through the vast expanse of the American West. The full trip travels across eight states — past wheat fields and ranches, missions and pueblos, mountains and deserts. You'll see spectacular landscapes and pristine vistas not visible from interstate highways. Visit [www.amtrak.com](http://www.amtrak.com) for ticket information.

## Car Rental

- |                       |                |
|-----------------------|----------------|
| A OK Car Rental       | (620) 275-4291 |
| Dollar Rent A Car     | (620) 276-7302 |
| Enterprise Rent-A-Car | (620) 276-4015 |
| Hertz                 | (620) 276-6884 |







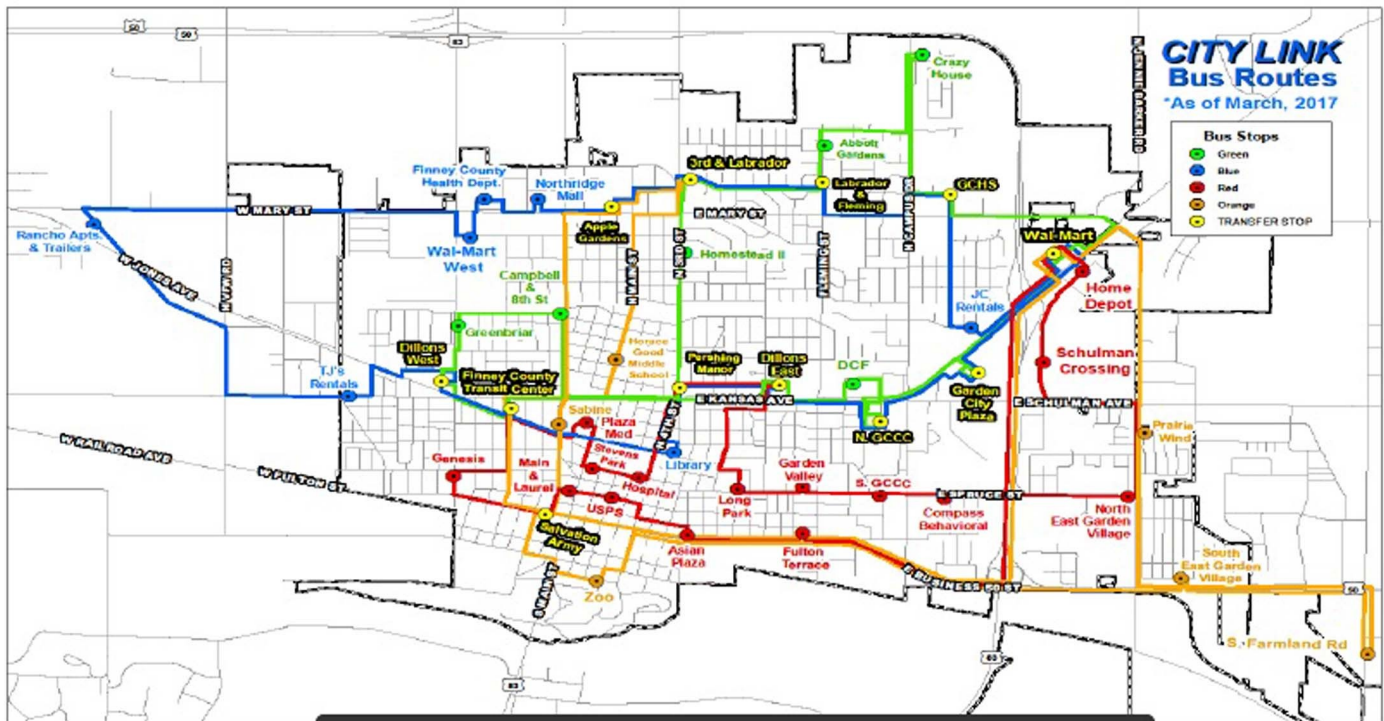
# City Link

City Link, Garden City's public transit system, operates on a daily basis. The bus system offers transportation to 65 stops around town.

Green Route		Red Route		Orange Route		Blue Route	
Every Hour (6:00 a.m. - 6:00 p.m.)		Every Hour (6:00 a.m. - 6:00 p.m.)		Every Hour (6:00 a.m. - 6:00 p.m.)		Every Hour (6:00 a.m. - 6:00 p.m.)	
FCT Center (Transfer)	:00	FCT Center (Transfer)	:00	FCT Center (Transfer)	:00	FCT Center (Transfer)	:00
Dillons West	:03	Plaza Medical	:03	Horace Good Middle School	:03	Library	:03
Greenbriar	:05	Stevens Park north side	:05	Third & Labrador (Transfer)	:06	Pershing Manor	:06
Campbell & 8th Street	:07	Hospital south side	:06	Apple Garden	:10	Dillons East	:09
Pershing Manor	:10	Pershing Manor	:10	Sabine House	:14	GCCC (North)	:12
Homestead II H & R	:12	Dillons East	:13	Salvation Army	:16	G.C. Plaza by GNC	:17
Third & Labrador (Transfer)	:15	Harold Long Park	:17	Zoo	:18	Wal-Mart	:21
Labrador & Fleming	:17	Garden Valley Retirement	:18	Wal-Mart	:31	JC Rentals	:23
Abbot Gardens	:18	GCCC (South)	:19	Prairie Wind	:35	GCHS	:25
Crazy House	:22	Community Support Services	:21	South Farmland Road	:39	Labrador & Fleming	:27
GCHS	:25	East Garden Village (North)	:24	East Garden Village	:44	Apple Gardens	:32
Wal-Mart	:31	Schulman Crossing	:26	FCT Center (Transfer)	:53	Northridge Mall	:34
G.C. Plaza by GNC	:35	Home Depot	:28			Finney County Health Dept	:35
GCCC (North)	:38	Wal-Mart	:31			Wal-Mart West	:37
SRS	:41	East Fulton Terrace	:38			Rancho Apts. & Trailers	:41
Dillons East	:43	Asian Plaza	:41			TJ's Rentals W. Kansas Ave	:45
FCT Center (Transfer)	:48	Post Office/Recreation Center	:44			Dillons West	:48
		Main & West Laurel	:46			FCT Center (Transfer)	:51
		Salvation Army on Fulton	:48				
		Genesis	:50				
		FCT Center (Transfer)	:52				

Arrive at the bus stop early.  
Buses depart promptly at posted times.

All Routes depart every hour on the hour from 6:00 a.m. - 6:00 p.m.



General Fare	\$1.00
Students (with valid ID)	\$0.50
Children 5 and Under	Free (with paying passenger)
General Public Monthly Pass	\$30.00

\*Discounted fares are available. Please contact Finney County Transit at (620) 272-3626.



# RESOURCES

## Electric

City of Garden City	(620) 276-1100
Wheatland Electric	(620) 275-0261

## Gas Service

Black Hills Energy	(888) 890-5554
--------------------	----------------

## Water/Sewer

City of Garden City	(620) 276-1100
City of Holcomb	(620) 277-2265

## Trash Collection

City of Garden City	(620) 276-1100
City of Holcomb	(620) 277-2265
Northend Disposal Services	(620) 227-3371
Waste Connections	(620) 275-4421

## Phone

AT&T	(844) 723-0252
Cox Communications	(866) 684-7142

## Cable TV

AT&T	(844) 723-0252
Cox Communications	(866) 684-7142

## Internet

AT&T	(844) 723-0252
Cox Communications	(866) 684-7142
United Wireless	(620) 276-4378
Verizon Wireless	(620) 276-6776
Wheatland Broadband	(866) 872-0006

## Wireless Service

AT&T	(620) 272-0383
Cricket Wireless	(620) 805-5330
United Wireless	(620) 276-4378
Verizon Wireless	(620) 276-6776







## County Government

**Finney County**  
311 N 9th St  
Garden City, KS  
(620) 272-3500  
[www.finneycounty.org](http://www.finneycounty.org)

## City Government

**City of Garden City**  
301 N 8th St  
Garden City, KS  
(620) 276-1160  
[www.garden-city.org](http://www.garden-city.org)

**City of Holcomb**  
200 N Lynch St  
Holcomb, KS 67851  
(620) 277-2265  
[www.holcombks.com](http://www.holcombks.com)

## Law Enforcement

**Finney County Sheriff's Office**  
304 N. 9th St  
Garden City, KS  
(620) 272-3700  
[www.finneycounty.org](http://www.finneycounty.org)

**Garden City Police Department**  
304 N 9th St  
Garden City, KS  
(620) 276-1300  
[www.gcpolice.org](http://www.gcpolice.org)

**Holcomb Police Department**  
200 N Lynch St  
Holcomb, KS  
620-277-2761  
[www.holcombks.com](http://www.holcombks.com)



## Emergency Services

**Finney County EMS**  
803 W Mary St  
Garden City, KS  
(620) 272-3822  
[www.finneycounty.org](http://www.finneycounty.org)

**Garden City Fire Department**  
302 N 9th St  
Garden City, KS  
(620) 276-1140  
[www.garden-city.org](http://www.garden-city.org)

**Holcomb Community Fire Department**  
200 N Lynch St  
Holcomb, KS  
(620) 277-2250  
[www.holcombks.com](http://www.holcombks.com)

# THANK YOU

Thank you for choosing Finney County as the place you call home. This guide is provided to you by Finney County Economic Development Corporation and the Finney County Workforce Connection.

*If you have a business in Finney County that is not listed in the guide, please contact [fcedc@ficoedc.com](mailto:fcedc@ficoedc.com) and we will get it added.*

**Finney County**  
**Economic Development Corporation**

114 W. Pine  
Garden City, KS 67846  
(620) 271-0388  
[www.ficoedc.com](http://www.ficoedc.com)  
[fcedc@ficedc.com](mailto:fcedc@ficedc.com)

## Mission

The Finney County Economic Development Corporation was created for and is committed to the continual improvement of the economic quality of life in the Finney County area.

## Goals

Promote, aid, develop, and advance new business and industry in Finney County, providing skilled, high-wage primary jobs for the welfare of the community.

Assist existing primary business and industry with growth and expansion plans through a proactive business retention program

Create a business environment conducive to entrepreneurship by providing financial support and technical assistance to primary businesses in collaboration with partner agencies.



The Finney County Economic Development Corporation works in partnership with local community organizations to create a community-wide campaign to recruit, enhance, and retain a sustainable workforce in the Finney County region. This initiative is known as the **Finney County Workforce Connection**. For more information, please visit [www.ficoedc.com/workforce](http://www.ficoedc.com/workforce).